

USB 2.0 10/100M Fast Ethernet Adapter

User's Manual

1. Introduction

The USB Ethernet 10/100 adapter performs good plug and play connection of PC peripherals “out -side the box” and mark a significant advance in desktop cable management. Using the USB Ethernet 10/100 adapter you can simplify your PC network connections in the home, office and on the travel.

2. Product Features

- USB specification Ver. 2.0 compliant.
- Supports USB Suspend/Resume Function.
- High-Speed USB Device.
- Supports wakeup frame, link status change and magic packet wake-up .
- Supports 2000/ XP /2003
- Supports plug and play.

3. System Requirements

- IBM PC or compatible PC with 486DX-100 MHz CPU or higher
- Available USB port
- CD-ROM drive
- At least 16MB of DRAM

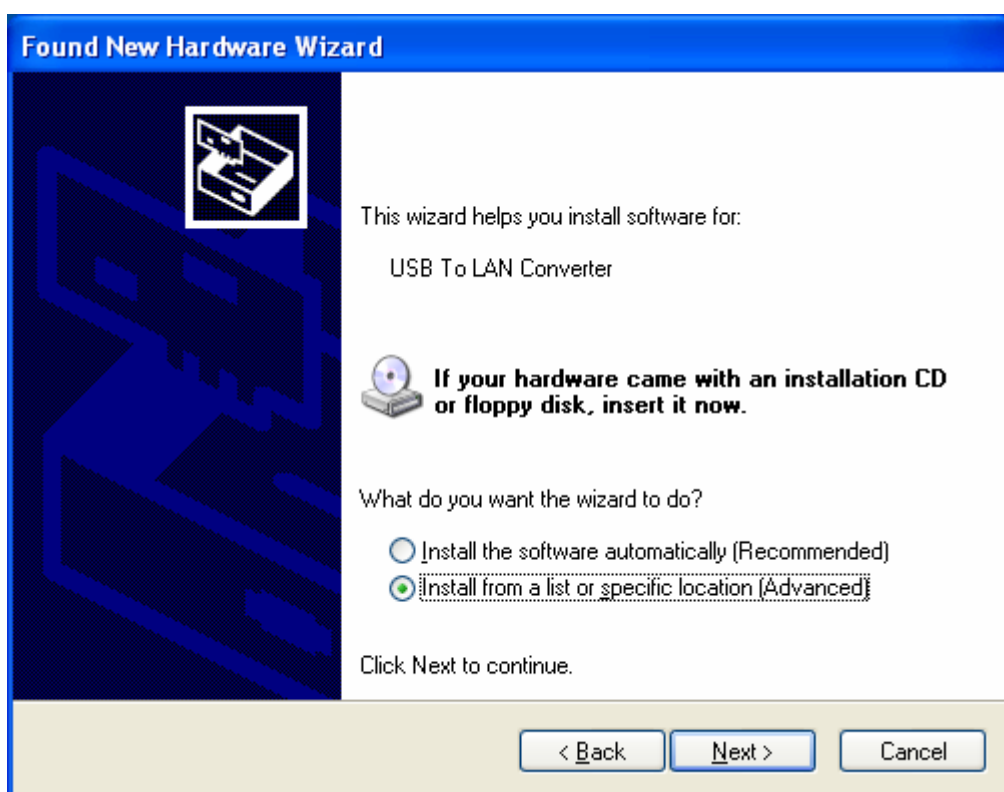
4. Installation of the USB Ethernet 10/100 adapter:

Follow the steps on installing the USB Ethernet 10/100 adapter software

1. Power on your computer and make sure that the USB port is enable and working properly.
2. Insert the “USB 2.0 to Fast Ethernet Adapter” to the USB port , it will be identified and indicate“ Found New Hardware Wizard”, please select “No, not this time”, click “Next “ to continue.



3. Select “Install from a list or specific location (Advanced)”, and click “Next” to continue.



4. Select “ Include this location in the search”, click “Browse” and select the folder that contains driver for your hardware, then click “OK”, press “Next” to continue .

Found New Hardware Wizard

Please choose your search and installation options.



☒ Search for the best driver in these locations.

Use the check boxes below to limit or expand the default search, which includes local paths and removable media. The best driver found will be installed.

☒ Search removable media (floppy, CD-ROM...)

☒ Include this location in the search:

D:\



Browse

☐ Don't search. I will choose the driver to install.

Choose this option to select the device driver from a list. Windows does not guarantee that the driver you choose will be the best match for your hardware.

< Back

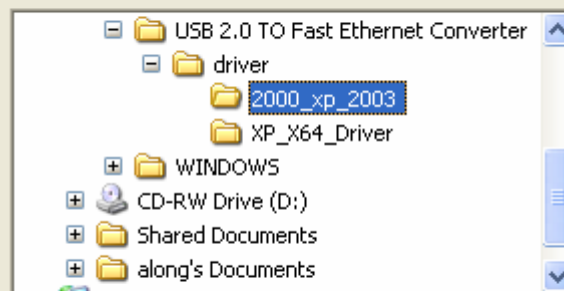
Next >

Cancel

Browse For Folder



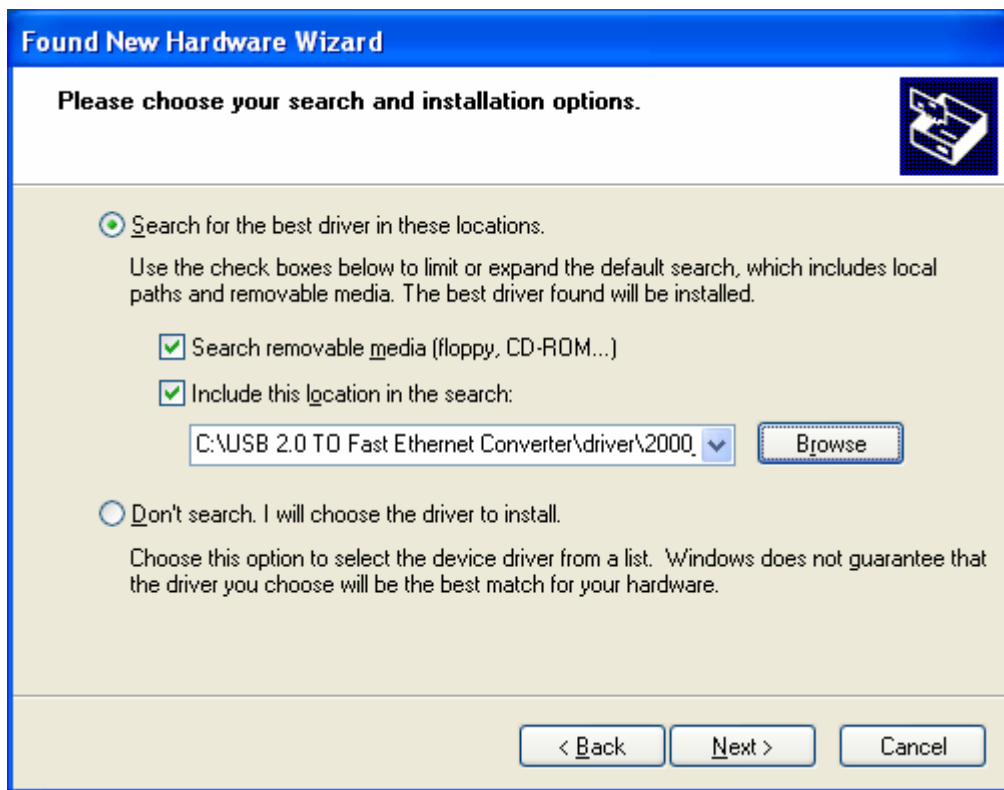
Select the folder that contains drivers for your hardware.



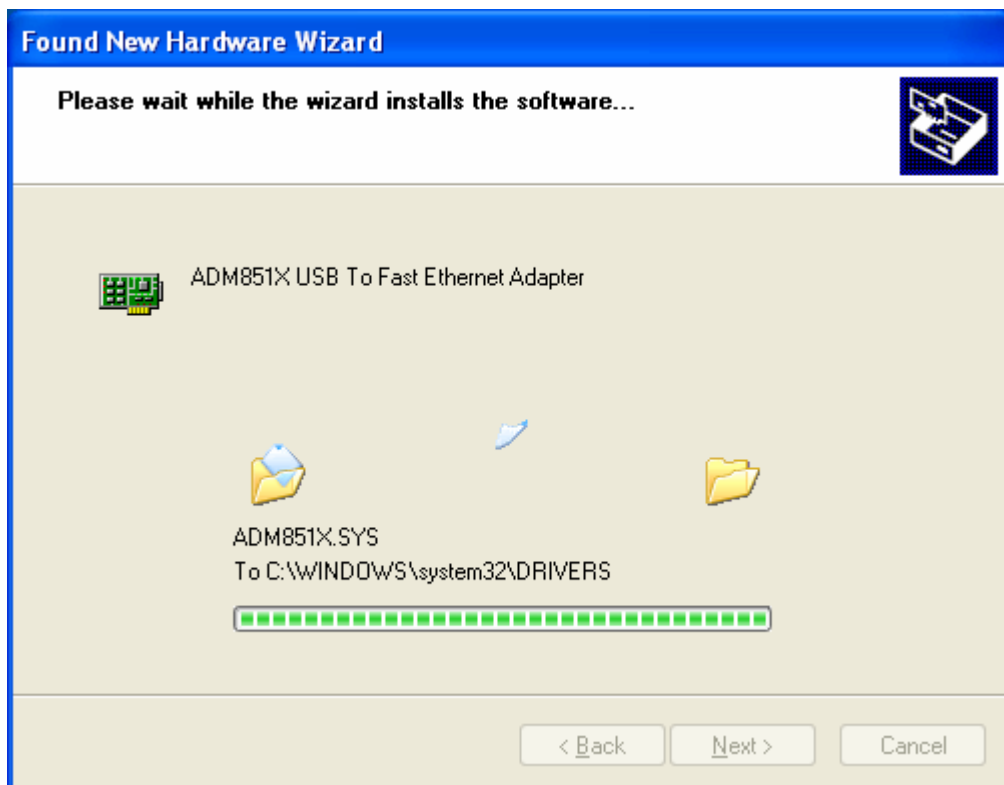
To view any subfolders, click a plus sign above.

OK

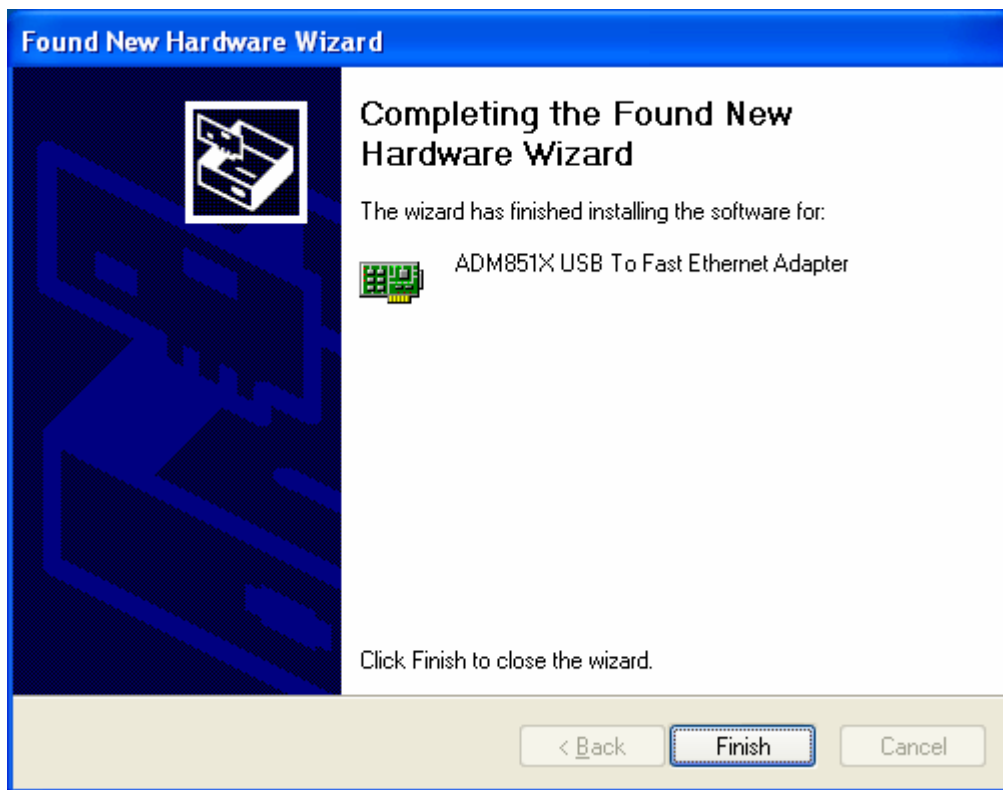
Cancel



5. Please start installing the driver.



6. After installation completed, please click “Finish” to close “Found New Hardware Wizard”.



7. In the menu of “Network Connections” or “Device Manager” – “Network adapter”, you will see a new adding Ethernet adapter – ADM851X USB TO Fast Ethernet Adapter, it made out that you have installed the driver of this adapter.

